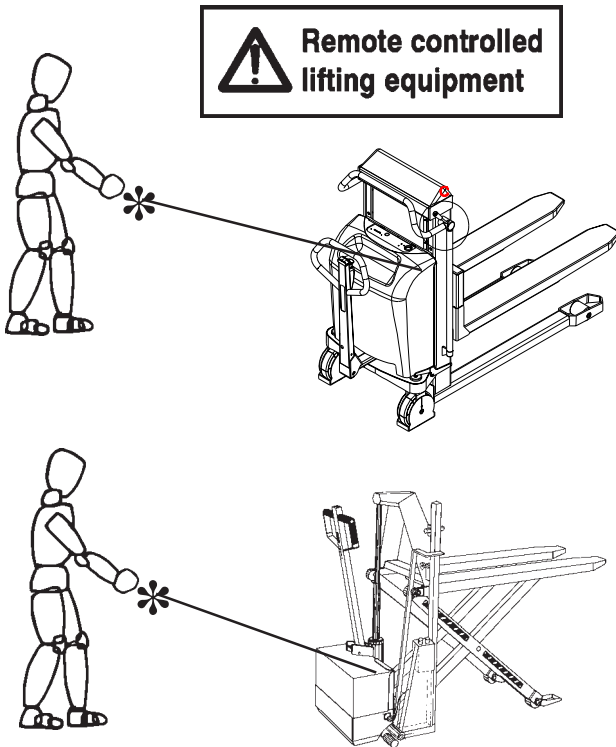


# Instruction Manual

## Safety precautions

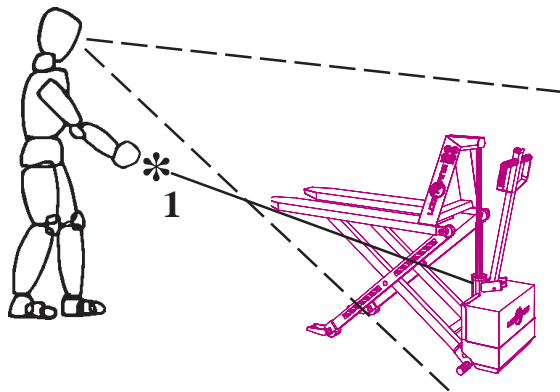
- Remote control of Logitrans lifting equipment



# LOGITRANS

[WWW.LOGITRANS.COM](http://WWW.LOGITRANS.COM)

## Mounting of remote control on EHL

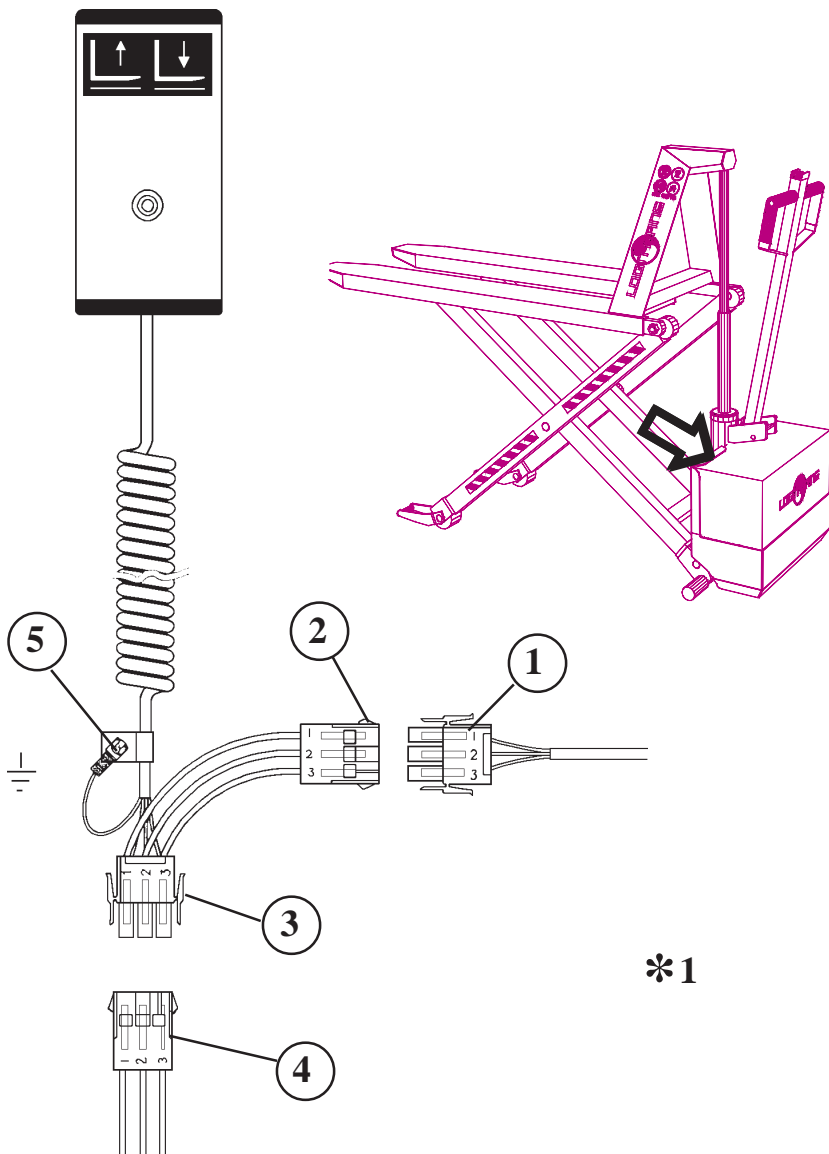


\*1

Cable remote control with  
hand-held control box

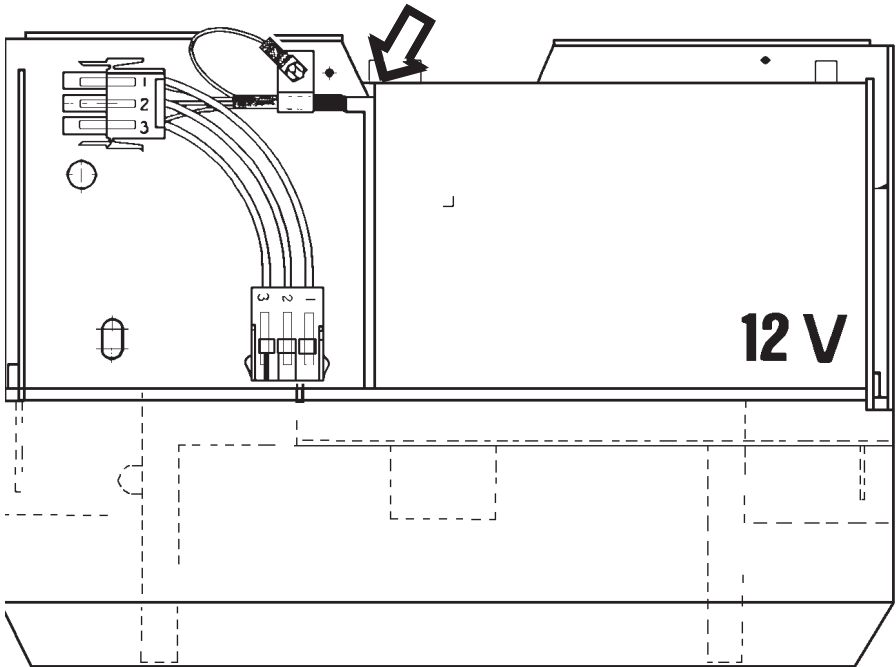


# Remote control EHL



# Mounting of remote control on EHL

1. Dismount + pole from the battery.
2. Dismount male plug (pos. 1) which is on the cable from the handle.
3. Assemble the male plug (pos. 3) mounted on remote control cable and the female plug (pos. 4) mounted on the EHL.
4. Assemble the male plug (pos. 1) on the cable from the handle and the female plug (pos. 2) on the remote control cable.
5. Remember tightening (pos. 5) at the remote control cable, so the wires are not pulled out off the plug. The chassis connection must be made at the cord relief.
6. Mount + pole on the battery and test the lifting/lowering function both at the remote control and the handle.
7. Remember to remove the protective disc from the magnet on the rear side of the remote control.



# Safety precautions

## Remote control of LOGITRANS lifting equipment

### Regarding:

Cable remote control with **hand-held box**.

Operating personnel must stand so that they always have a full view of raising/lowering movements of the lifting equipment.

Before operation, a check must be made to ensure that there are no obstructions. No foreign material must be placed under lifting equipment.

**BE CAREFUL** to ensure that the forks/load do not foul foreign material when lifting and lowering. **See also the relevant instruction manual!**

If operating personnel do not have a full view of the lifting equipment and its lifting/lowering movements, barriers must be erected around the area where the equipment is used.

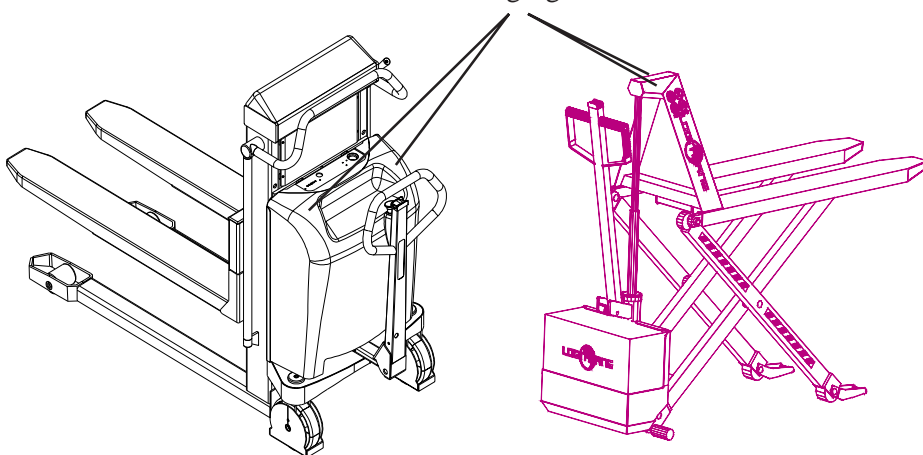
Lifting equipment must carry warning signs with the following text:

- *Black lettering on yellow background:*

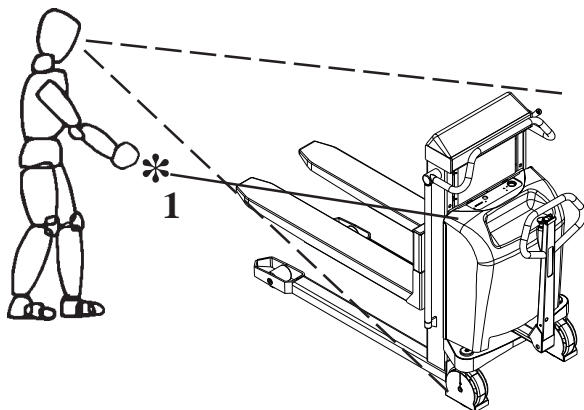


The signs must be placed as shown on the sketches of EHL and LL / ELF below.

Warning signs

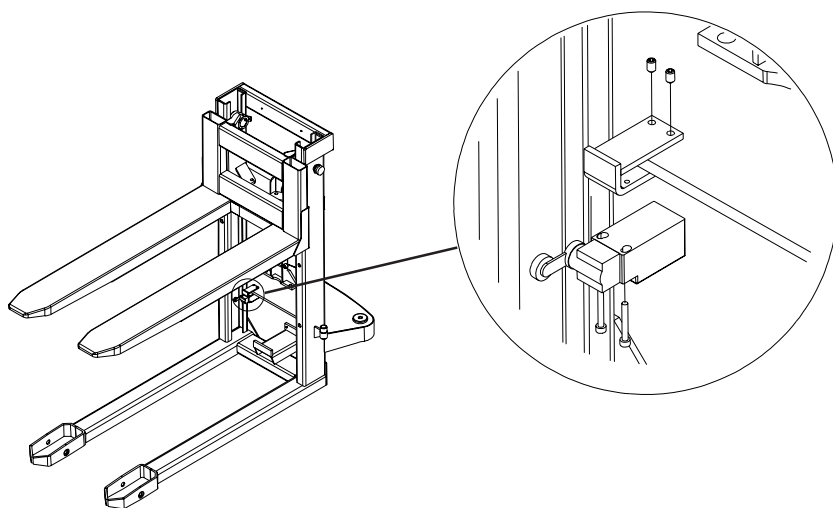
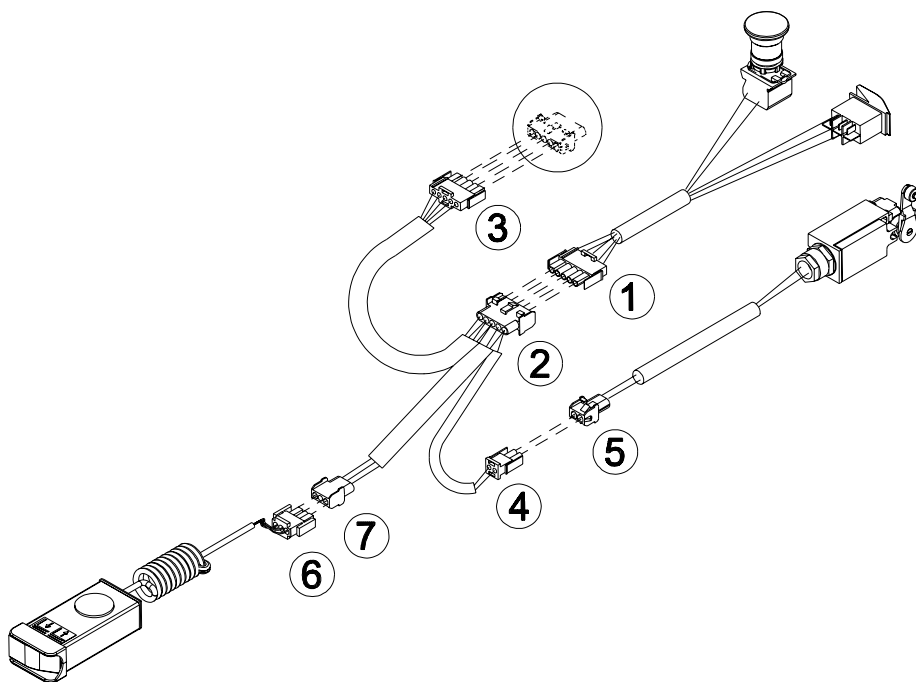


## Mounting of remote control on LL / ELF



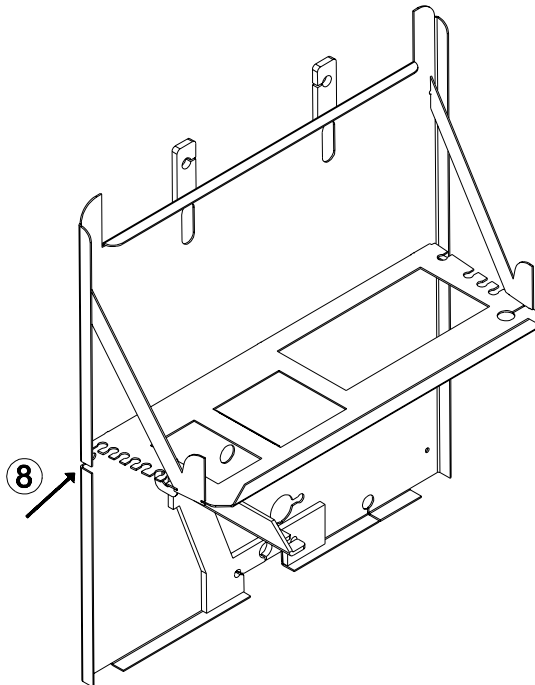
Cable remote control with  
hand-held control box

## Remote control LL / ELF



# How to fit remote control on LL and ELF

1. Dismount +pole from the battery.
2. Dismount male plug (pos. 1), fitted on the handle cable.
3. Assemble the male plug on the handle (pos. 1) and the female plug on the adapter (pos. 2).
4. Assemble the male plug on the adapter (pos. 3) and female plug on the truck
5. Assemble the male plug on the adapter (pos. 4) and the female plug on the switch (pos. 5).
6. Place the bottom switch as shown on figure 2.
7. Assemble male plug of remote control (pos. 6) and female plug of adapter (pos. 7).
8. The rubber lead-in on the cable for the remote control is led through the pump chassis (pos. 8).
9. Put on the +pole on the battery, and check the lifting/lowering function on the remote control as well as on the handle. Check that the bottom switch works correctly (stops c. 200 mm above the floor). The forks can only be lowered to the floor by means of the lowering function of the handle.
10. Remember to remove the protection disc from the magnet on the rear side of the remote control.





### **Periodic safety inspection**

Safety inspection should be performed by the supplier or other qualified persons at least once each year, unless local regulations state otherwise.

Such inspection shall be performed in accordance with the instruction manual. Test instructions and test forms are available from the distributor.