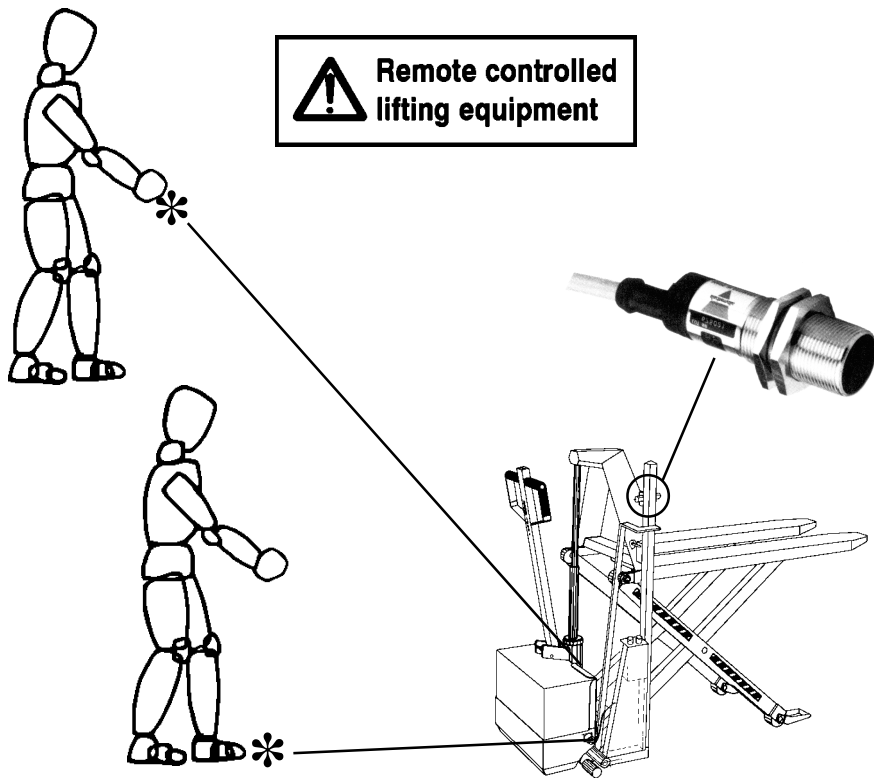


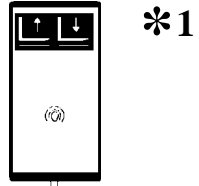
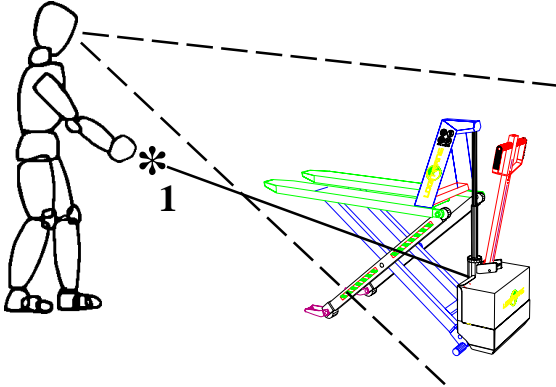
# Instruction Manual

## Safety precautions

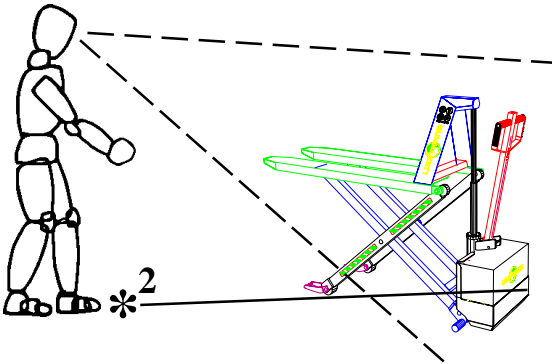
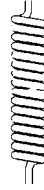
- Remote control of Logitrans lifting equipment



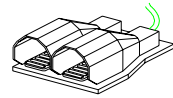
# LOGITRANS



Cable remote control with hand-held control box



Cable remote control with foot switch



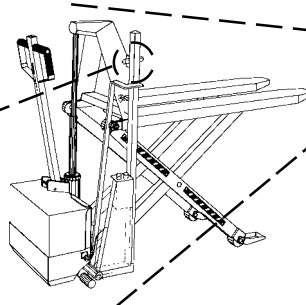
\* 2

Cableless control with photocell

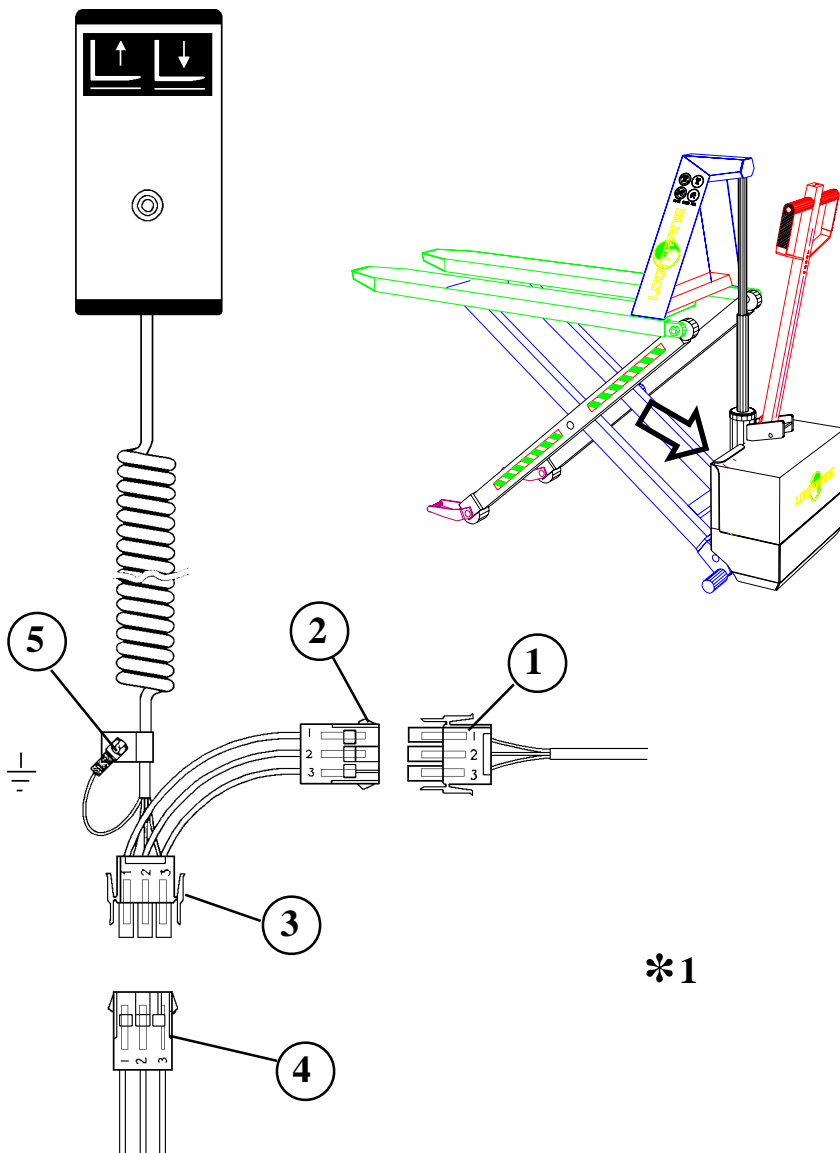
\* 3



\* 3

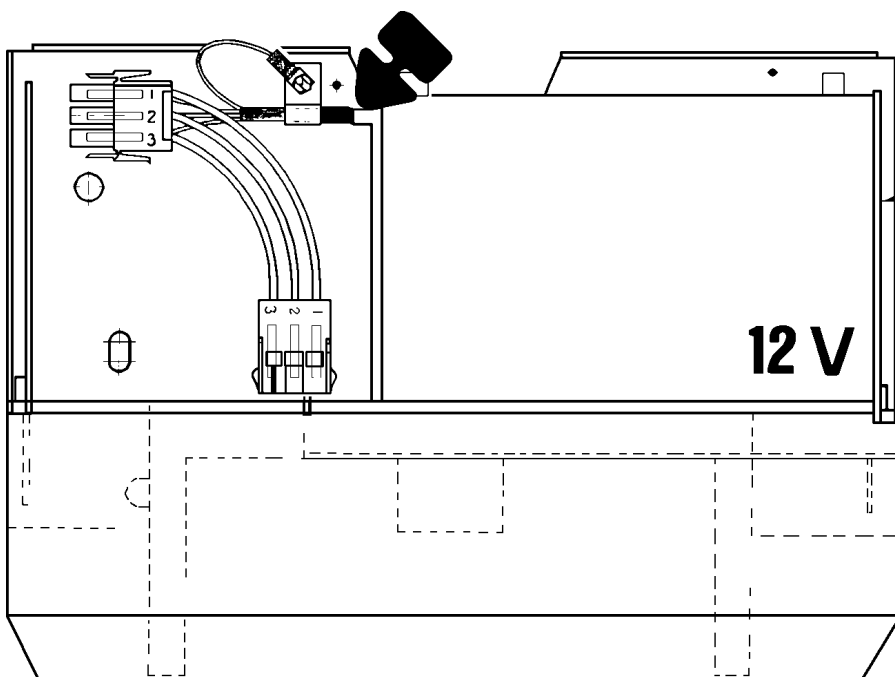


# Remote control

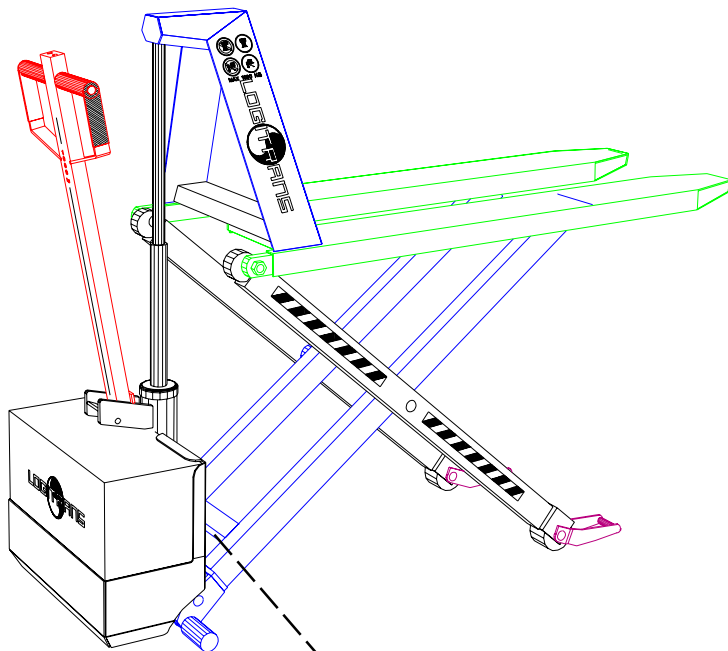


## Mounting of remote control on EHL, EHS or LOGILIFT

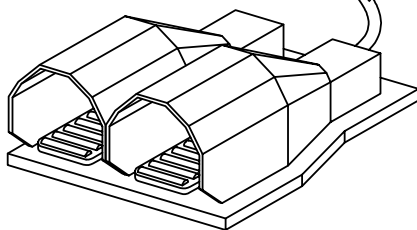
1. Dismount + pole from the battery.
2. Dismount male plug (pos. 1) which is on the cable from the handle.
3. Assemble the male plug (pos. 3) mounted on remote control cable and the female plug (pos. 4) mounted on the EHL, EHS or LOGILIFT.
4. Assemble the male plug (pos. 1) on the cable from the handle and the female plug (pos. 2) on the remote control cable.
5. Remember tightening (pos. 5) at the remote control cable, so the wires are not pulled out off the plug. The chassis connection must be made at the cord relief.
6. Mount + pole on the battery and test the lifting/lowering function both at the remote control and the handle.
7. Remember to remove the protective disc from the magnet on the rear side of the remote control.



# Pedal operation



\* 2

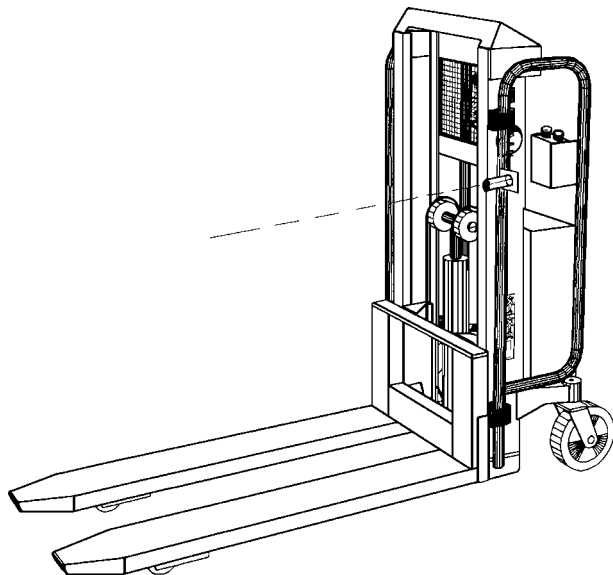
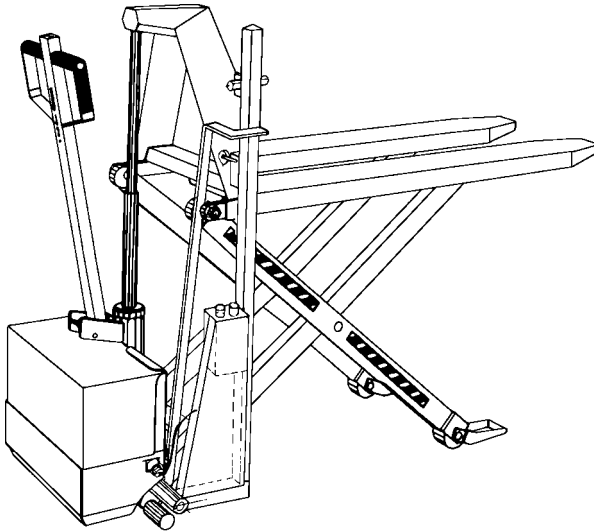


# Positioning equipment

Positioning equipment is available as an optional extra for the electric highlifter and the Logilift.

The positioning equipment for the highlifter is detachable and can easily be installed or removed.

On the Logilift the equipment is permanently attached to the left-hand catcher.



# Positioning equipment

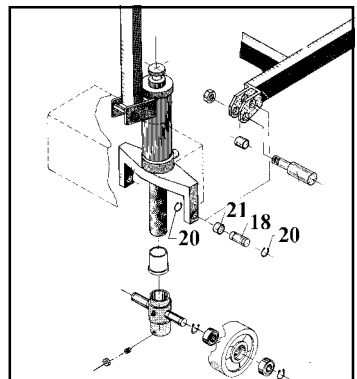
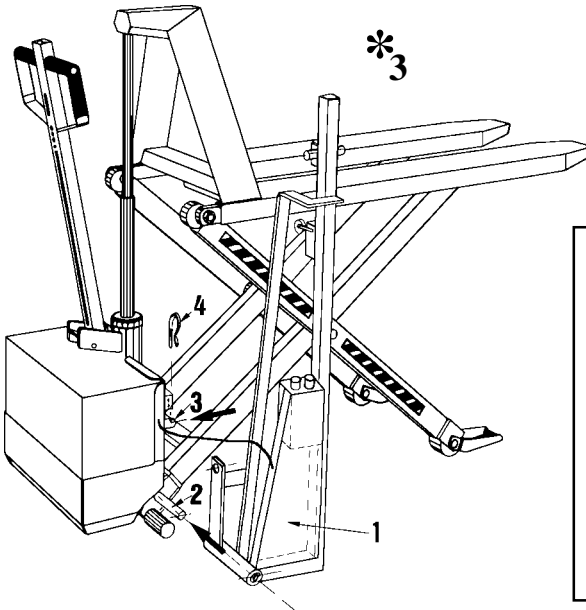
## Assembly - EHL

### Before installation

**IMPORTANT!...**

- \* The highlifter must be in **LOWERED POSITION** when fitting or removing positioning equipment.
- \* **THE CONTROL BOX KNOB** must be in **neutral (mid) position**.

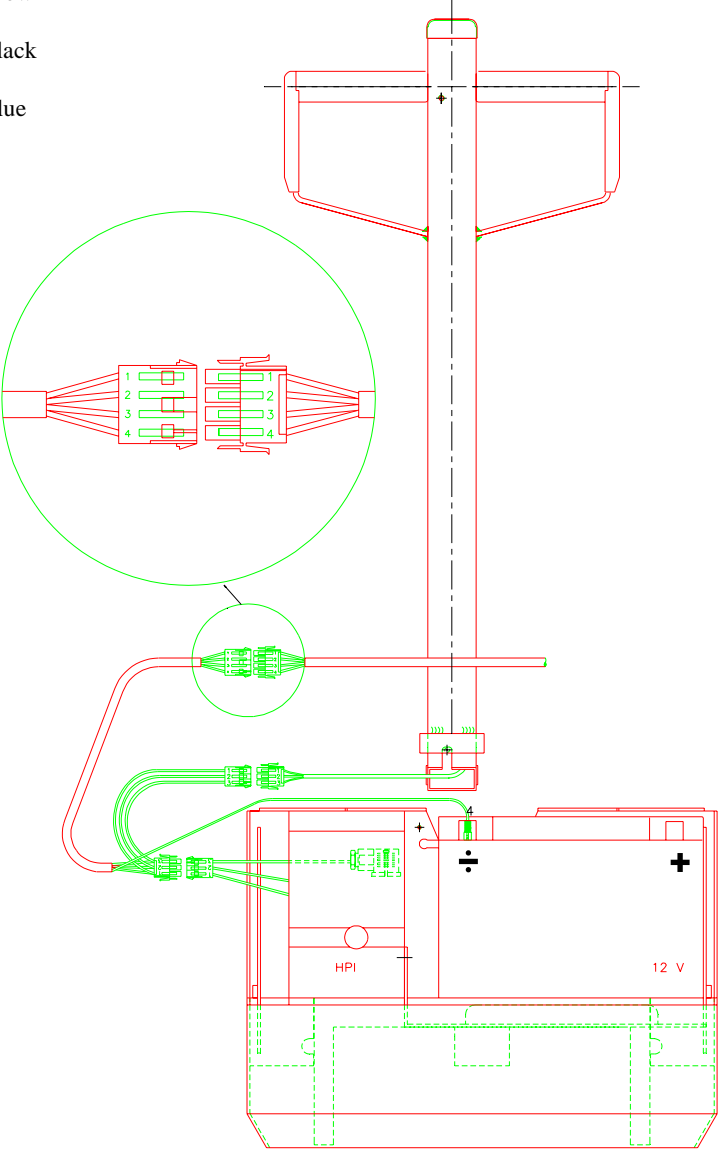
1. Remove locking ring (20) from right-hand end of axle.
2. Remove axle (18).
3. Insert axle supplied with positioning equipment (\*3, 2).
4. Re-attach locking ring.
5. Push positioning equipment onto assembly axle (\*3, 2).
6. Pull equipment over pin (\*3, 3).
7. Insert split pin (\*3, 4).
8. For installation of plug and wiring see next two pages.



# Installation of wiring - EHL 1000/2 & 1000/3

## Wires

- 1. Green/yellow
- 2. Brown
- 3. Black
- 4. Blue

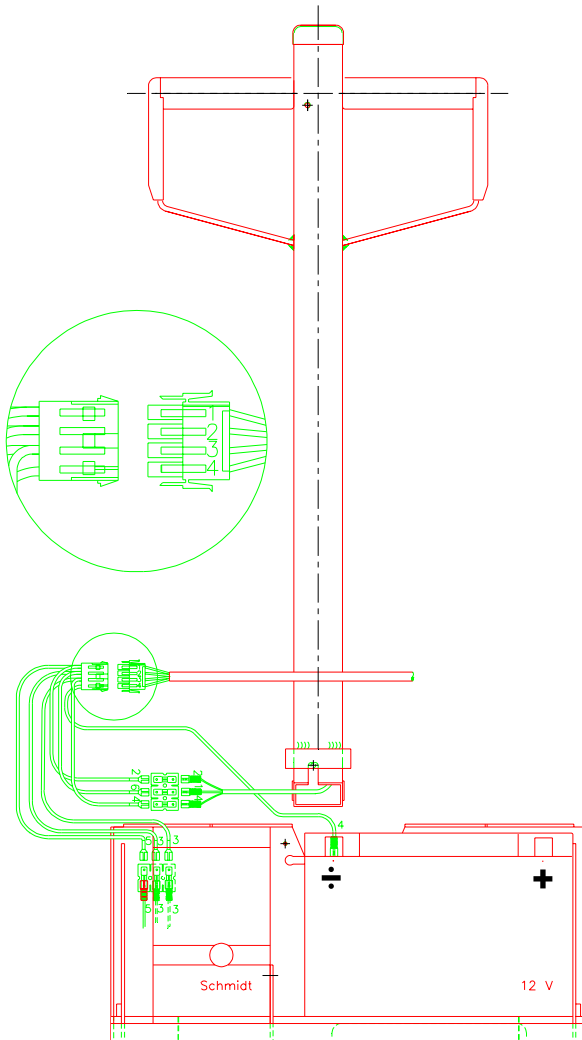




# Installation of wiring - EHL 1000/1

## Wires

1. Green/yellow
2. Brown
3. Black
4. Blue
5. Green
6. Yellow



# Operation

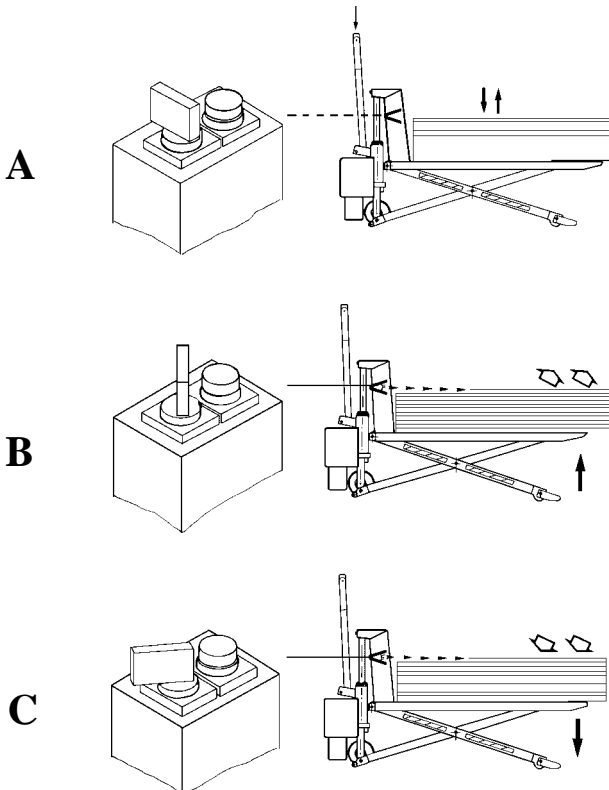
The control box has three settings: **Neutral - UP - DOWN**

- A: Neutral:** EHL/LOGILIFT operated by knobs.  
**B: Turn clockwise:** When goods are **removed** from forks, the **forks lift**.  
**C: Turn counter clockwise:** When goods are **placed** on forks, the **forks lower**.

**NOTE!** Positioning equipment incorporates two safety switches, i.e. top switch and bottom switch. Activation of these two switches cuts off the control box electric circuit and EHL/LOGILIFT **can then only** be operated from the buttons in the handle.

**The pushbuttons in the handle are ALWAYS active.**

See **safety precautions** for remote control of LOGITRANS lifting equipment



# Safety precautions

## Remote control of LOGITRANS lifting equipment

### Regarding:

Cable remote control with **hand-held box**.

Cable remote control with **foot switch**.

Control by photocell connected to **positioning equipment**.

Operating personnel must stand so that they always have a full view of raising/lowering movements of the lifting equipment.

Before operation, a check must be made to ensure that there are no obstructions. No foreign material must be placed under lifting equipment.

**BE CAREFUL** to ensure that the forks/load do not foul foreign material when lifting and lowering. **See also the relevant instruction manual!**

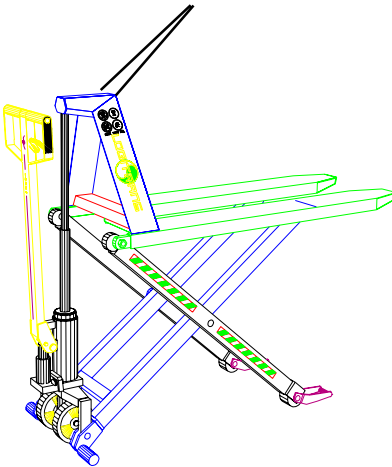
If operating personnel do not have a full view of the lifting equipment and its lifting/lowering movements, barriers must be erected around the area where the equipment is used.

Lifting equipment must carry warning signs with the following text:

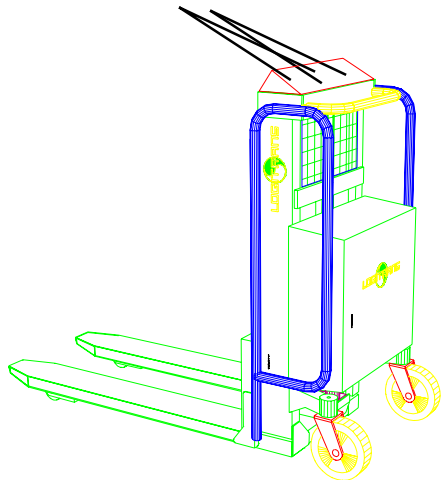
- *Black lettering on yellow background:*

**REMOTE-CONTROLLED  
LIFTING EQUIPMENT**

Warning signs



Warning signs



### **Periodic safety inspection**

Safety inspection should be performed by the supplier or other qualified persons at least once each year, unless local regulations state otherwise.

Such inspection shall be performed in accordance with the instruction manual. Test instructions and test forms are available from the distributor.